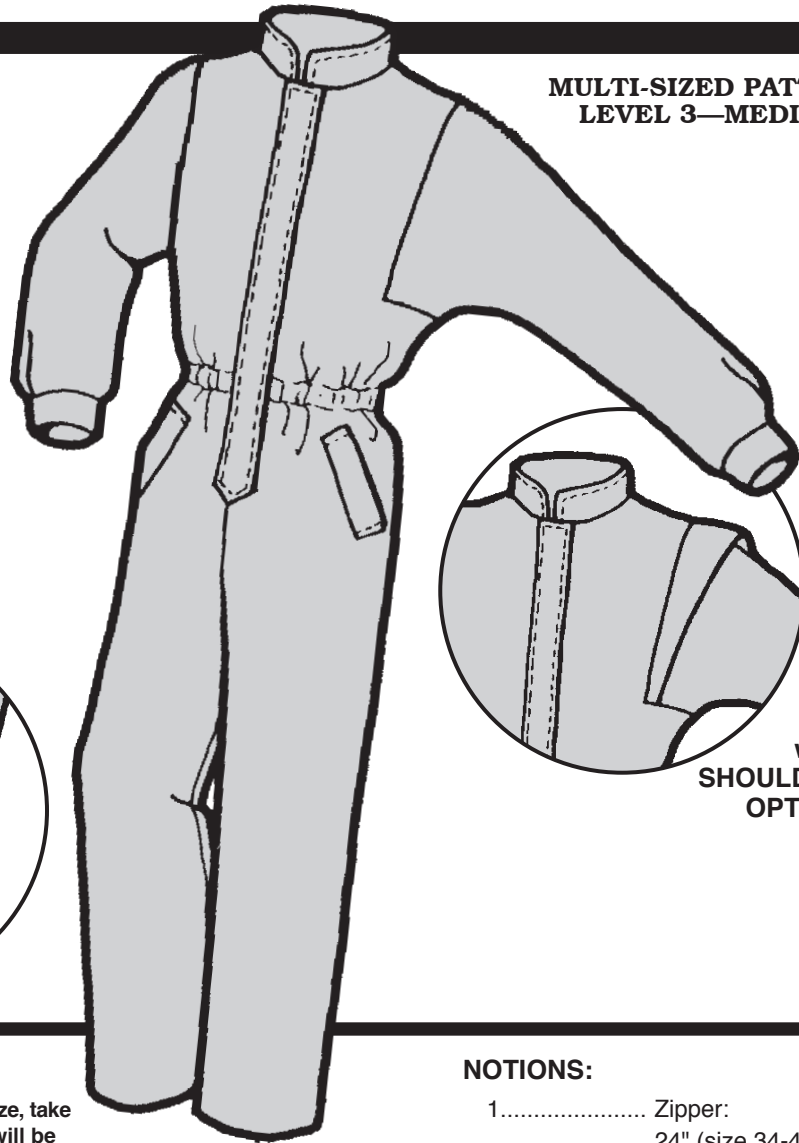
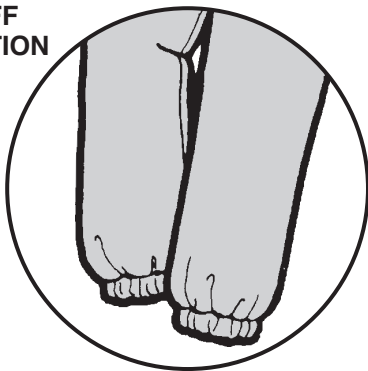


**MEN'S
BLACK BUTTE JUMPSUIT**

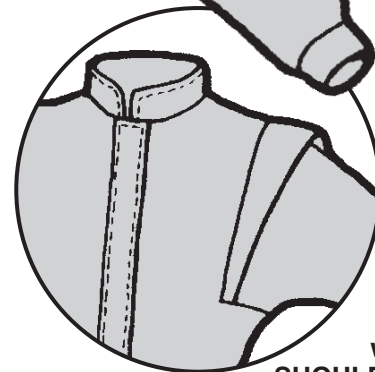
**MULTI-SIZED PATTERN
LEVEL 3—MEDIUM**



with
CUFF
OPTION



with
SHOULDER
OPTION



MEASUREMENTS:

IMPORTANT: When selecting pattern size, take measurements over clothing that will be worn under finished garment.

SIZE	34	36	38	40	42	44	46	48
Chest	34"	36"	38"	40"	42"	44"	46"	48"
Waist	28"	30"	32"	34"	36"	38"	40"	42"
Hip	34"	36"	38"	40"	42"	44"	46"	49"
Back Waist Length	17 ¹ / ₂ "	17 ³ / ₄ "	18"	18 ¹ / ₄ "	18 ¹ / ₂ "	18 ³ / ₄ "	19"	19 ¹ / ₄ "

FABRIC:

Outer Fabric	34-36	38-42	44-48
.....60"	3 ⁵ / ₈ yd (3.3 m)	3 ³ / ₄ yd (3.5 m)	3 ³ / ₄ yd (3.5 m)
.....45"	4 ¹ / ₂ yd (4.1 m)	4 ³ / ₄ yd (4.4 m)	5 ¹ / ₄ yd (4.8 m)
Interfacing	1/2 yd (.46 m)	1/2 yd (.46 m)	1/2 yd (.46 m)

NOTIONS:

- 1..... Zipper:
24" (size 34-42), or
26" (size 44-48)
- 2..... Locking Zipper Pulls
- 2 yd (1.8 m)..... 3/4" Elastic
- 1 All-polyester Thread

SUGGESTED FABRICS:

Main Fabric - Tightly woven Lightweight Waterproof, Waterproof Breathable, or Water-Repellent Fabric.
Interfacing - 3.1 oz. Needlepunch.